

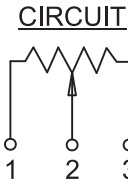
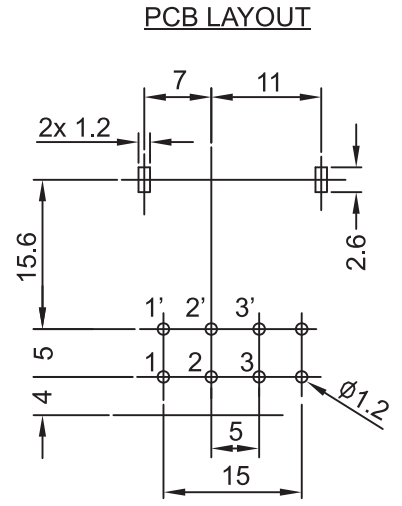
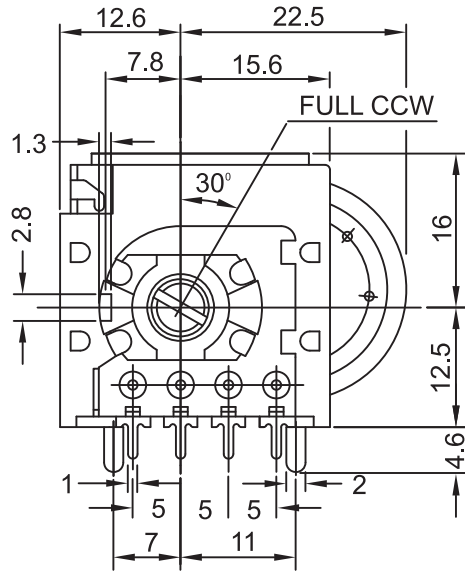
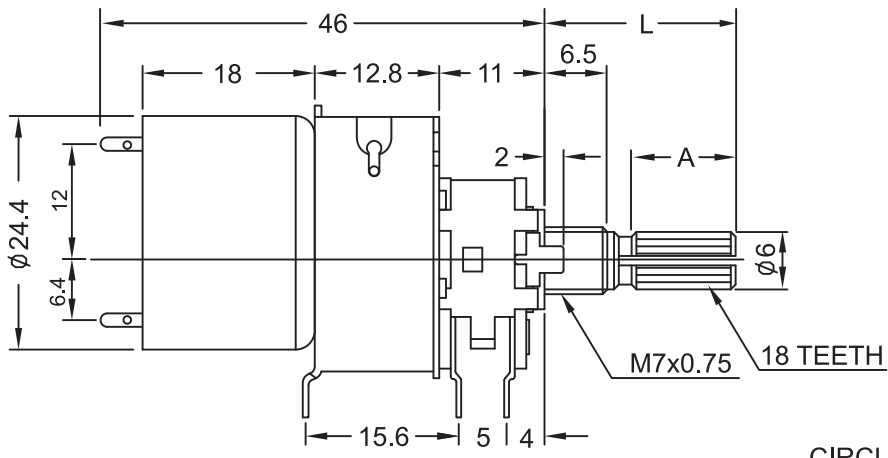
All information on this drawing is proprietary and may not be reproduced in any manner or made available to any unauthorized person/party without written permission of ALPHA PRODUCTS, INC.



CUSTOMER APPROVAL	
SIGNATURE _____	DATE _____

REVISIONS			
REV.	DESCRIPTION	DATE	APPROVED

- MARKING:
- BAGGING:
- UPACKING:
- LOGO (ALPHA ONLY):
- FULL LOGO:



**SPECIFICATIONS:**

1. TOTAL RESISTANCE: 2K ~ 470K +/-20%
2. TAPER: A (AUDIO), B (LINEAR)
3. TOTAL ROTATIONAL ANGLE: 300 DEG. +/-10 DEG.
4. RATED POWER: TAPER A: 0.1W, TAPER B: 0.2W
5. OPERATING VOLTAGE: TAPER A: 150V MAX, TAPER B: 200V MAX
6. OPERATING CURRENT OF MOTOR SECTION: 150mA MAX
7. INSULATION RESISTANCE: 100MOhm @250V DC MIN
8. WITHSTAND VOLTAGE: 250V AC FOR 1 MINUTE
9. ROTATIONAL SPEED: 11+/-3 SEC. @4.5V DC
10. LIFE: 10,000 CYCLES

AVAILABLE SHAFT LENGTH			
DIM "L"	15	20	25
DIM "A"	6	8	10.5

1. ALL DIMENSIONS ARE IN MM.  
NOTES:

VCN	CCN	AGE
APPLICATION		

ITEM #	QTY	UNIT	PART OR IDENTIFYING NO.	NOMENCLATURE OR DESCRIPTION	MATERIAL SPECIFICATION						
PARTS LIST											
TOLERANCES (UNLESS OTHERWISE SPECIFIED)			CONTRACT NO.								
MATERIAL			APPROVALS								
FINISH			DATE								
DO NOT SCALE DRAWING			<table border="1" style="width: 100%; text-align: center;"> <tr> <td>ISSUED</td> <td>G.S.</td> <td>01/23/14</td> </tr> <tr> <td>CHECKED</td> <td>R.G.</td> <td>01/23/14</td> </tr> </table>			ISSUED	G.S.	01/23/14	CHECKED	R.G.	01/23/14
ISSUED	G.S.	01/23/14									
CHECKED	R.G.	01/23/14									
		351 IRVING DR, OXNARD, CA 93030 USA TEL: (805)981-8666 FAX: (805)988-6555 E-MAIL: info@alpha-products.com									
<b>POT, MOTORIZED, 16MM, KNURLED SHAFT, PCB</b>		SIZE B FSCM NO. 8U759		DWG NO. 300/RC040700							
SCALE NONE			SHEET 1 OF 1								